



**UNION COUNTY
BOARD OF CHOSEN FREEHOLDERS**

Angel G. Estrada, *Chairman*
Alexander Mirabella, *Vice Chairman*
Chester Holmes Deborah P. Scanlon
Bette Jane Kowalski Daniel P. Sullivan
Rick Proctor Rayland Van Blake
Nancy Ward

George W. Devanney, *County Manager*
M. Elizabeth Genievich, *CMC, MPA,*

Director Administrative Services

Alfred J. Faella, *Director,*

Charles Sigmund Jr., *Deputy Director,*
Department of Parks & Community Renewal

A SERVICE OF THE
UNION COUNTY
BOARD OF CHOSEN
FREEHOLDERS



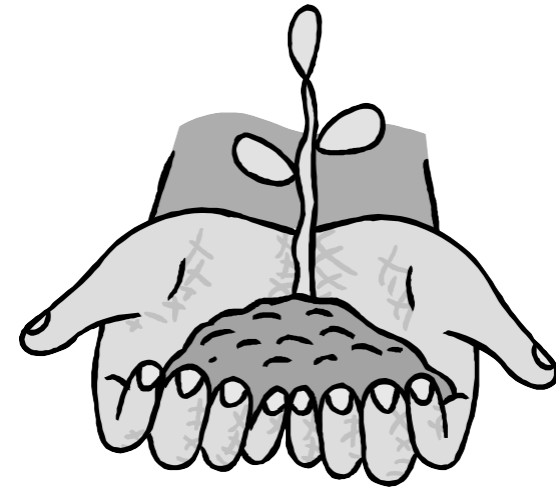
Union County
We're Connected to You!

A SERVICE OF THE
UNION COUNTY
BOARD OF CHOSEN
FREEHOLDERS



Union County
We're Connected to You!

ADOPT-A-PARK



SAFETY GUIDELINES AND RECOMMENDATIONS FOR PARTICIPANTS

Administered by the
Department of Parks and Community Renewal
(908)527-4900

Thank you for participating in Union County's Adopt-A-Park program. Before you begin your project, please take a moment to acquaint yourself with the following safety guidelines and recommendations.

Emergency information

Familiarize yourself with emergency procedures and how to quickly summon the police or an ambulance. A cellular phone on site is recommended.

In case of emergency call the Union County Police at (908)654-9800.

First aid

The leader must have a first aid kit on site. Be sure to inform your group leader of **known allergies and physical infirmities** prior to participation.

Water breaks

Bring a water supply. Avoid potential problems from over-exertion and heat by drinking water and taking rest breaks.

Clothing

Wear long-sleeved shirts, jeans or long pants, sturdy leather or heavy-soled shoes or boots and gloves.

Youth Participation

Provide appropriate and adequate adult supervision when youth groups are involved in the program.

Avoid unsafe behavior

Climbing trees, horseplay, standing or jumping on guide rails, etc., are considered unsafe behavior and are not allowed at maintenance/clean-up sites.

Recycling

Sort collected debris into two categories:

- Recyclable (glass, aluminum, paper, plastic)
- Non-recyclable (all other material)

It will be easier to sort trash as you pick it up rather than sort it at the final disposal site.

Bring collected trash to disposal and recycling sites as directed by your group coordinator.

Be alert for hazards

- Follow all guidelines when applying paint or other materials.
- Learn to identify **poison ivy**. The recommended attire will usually prevent irritations from most plants.
- Be alert for **bees, wasps and hornets**.
- Tuck pant legs into socks, and your shirt into your pants to prevent **tick** exposure. Check your head and body thoroughly when you return home.
- Pay special attention to the handling of **broken glass**. Be careful not to step or kneel on broken glass.
- Cancel maintenance or pick-up during **extreme weather** conditions.
- Avoid and do not pick up animal carcasses or suspicious materials. Report any waste of this type to your group coordinator.

ALCOHOL IS FORBIDDEN AT ALL MAINTENANCE AND CLEAN-UP SITES.

If for any reason your group coordinator changes, please contact the Department of Parks and Community Renewal with the new coordinator's name and phone number.

You may not participate in a cleanup or maintenance program if you have not signed the waiver form.

Educate your family and friends about Adopt-A-Park and ask them to volunteer by calling (908) 527-4900.