

**What
does
this
symbol
mean?**



**Name
an item
you
can
recycle.**



**Throwing
trash on the
ground is
called.....**



**What
are
the
three
R's?**



**Where
should you
put a
candy
wrapper?**



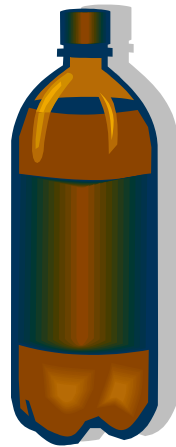
**Do we
recycle
metal cans?**



**Do we
recycle
newspaper?**



**Do we
recycle
plastic
bottles?**



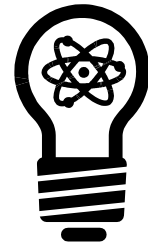
**Do we
recycle glass
jars and
bottles?**



**Save _____
by turning
off the
faucet while
you brush
your
teeth.**



Save _____
by
turning
off lights
after you
leave
a room.



**How can
litter
harm
animals?**



**Why are
balloons
dangerous
when
released?**

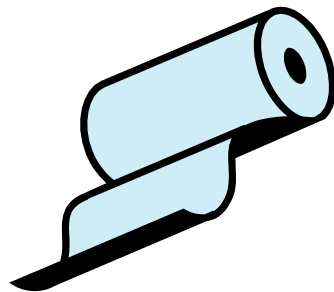


Vermi-
compost-
ing is
composting
using



_____.

True or False
You should
recycle your
paper
towels.



True or False
We must
recycle at
home and
in our
schools.



True or False
Americans use
2.5 million
plastic
bottles
every
hour.



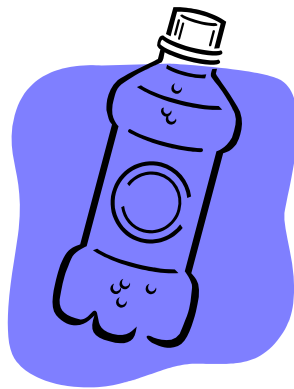
is using
old vegetables,
fruit, and leaves
to make a rich
amendment
for plants.



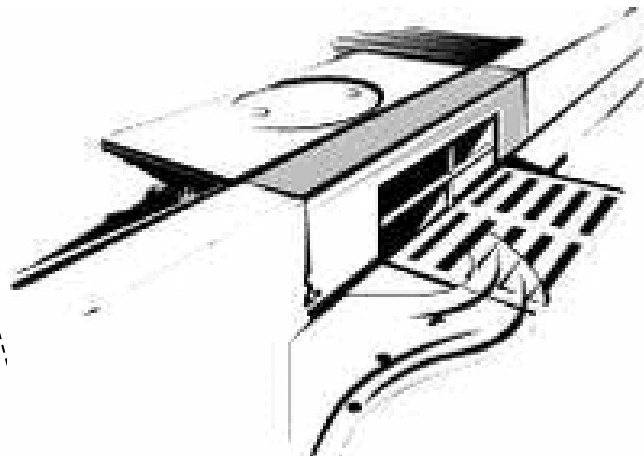
True or False
All plastic
must be
recycled.



**How long
does it take
a plastic
bottle to
decompose?**



**Is water that goes
into a storm drain
treated to
remove
pollutants before
going to the
ocean?**



**Name 3 items
that must be
recycled in
Middlesex
County.**



True or False
Using a
mulching lawn
mower is
good for
your yard.



**In New Jersey,
who is
supposed to
recycle?**



True or False
Everyone
should recycle
but it is
still
voluntary.



**What type of
bags should
you use
while
shopping?**



**How do you
dispose of
old
oil-based
paints?**



**A cigarette butt
takes
10 weeks or
10 years to
decompose?**



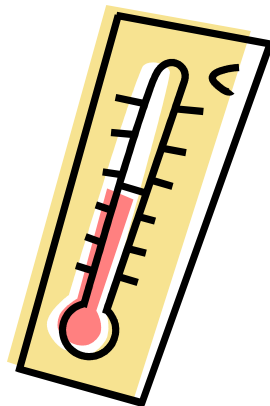
**How long do
red wiggler
worms
live?**



**What types of
worms are
used in
vermi
composting?**

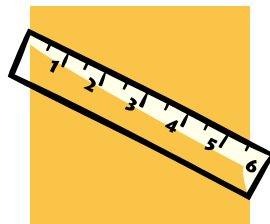


**Can you keep
your
vermicompost
bin
outdoors?**

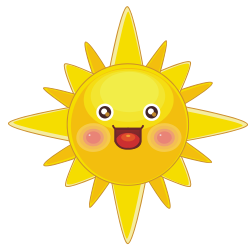


**Vermicompost
containers
should be**

**inches
deep.**



**Do worms
like to be in
the light
or dark?**



**How many
worms are in
a pound of
red
wrigglers?**



**How many
hearts
does a
worm have?**



**How many
cocoons can
a worm
make per
week?**



**Each
worm cocoon
produces
how many
babies?**



**True or False -
Don't put
sweet fruits
like peaches
in your
vermi bin.**



**True or False -
Worms eat
half their
weight
per day.**



Preschool



1. What does this symbol mean?
 2. Name an item you can recycle.
 3. Throwing trash on the ground is called _____.
 4. What are the three R's?
 5. Where should you put a candy wrapper?
 6. Do we recycle cans?
 7. Do we recycle newspapers?
 8. Do we recycle plastic soda bottles?
- Do we recycle glass jars?

Elementary

1. Save ____ by turning off the faucet while you brush your teeth.
 2. Save ____ by turning off lights after you leave a room.
 3. How can litter harm animals?
 4. Why are balloons dangerous when released?
 5. Vermicomposting is composting using _____.
 6. True or False - You should recycle your paper towels.
 7. True or False - We must recycle at home and in our schools.
- True or False – Americans use 2.5 million plastic bottles every hour. (True)

Middle School

1. _____ is using old vegetables, fruit, leaves, and plant cuttings to make a rich food (soil) for plants.
 2. True or False - All plastic must be recycled. (False)
 3. How long does it take a plastic bottle to decompose? (450 - 500 years)
- Is water that goes into a storm drain treated to remove pollutants before going to the ocean? (No)

High School and up

1. Name 3 items that must be recycled in Middlesex County.
 2. True or False Using a mulching lawn mower is good for your yard. (True)
 3. In New Jersey, who is supposed to recycle? (Everyone)
 4. True or False - Everyone should recycle but it is still voluntary. (False)
 5. What type of bags should you use while shopping? (canvas bags)
 6. How do you dispose of old oil-based paints? (Paint drop-off program or HHW event)
- A cigarette butt takes 10 weeks or 10 years to decompose? (10 years)

Vermi Questions

1. How long do red wiggler worms live? (up to 10 years)
2. What types of worms are used in vermicomposting? (Red Wiggler or brown nosed red wiggler)
3. Can you keep your vermicompost bin outdoors? (Bins should be kept in a room with a temperature range of 55 - 77 degrees)
4. Vermicompost containers should be ____ inches deep. (12)
5. Do worms like to be in the light or dark? (Dark)
6. How many worms are in a pound of red wigglers? (~1000)
7. How many hearts does a worm have? (5)
8. How many cocoons can a worm make per week? (3 - 5)
9. Each worm cocoon produces how many babies? (2-15)
10. True or False - Don't put sweet fruits like peaches in your vermi bin. (False - Red wigglers love sweet fruits)
11. Worms eat half their weight per day. (True)